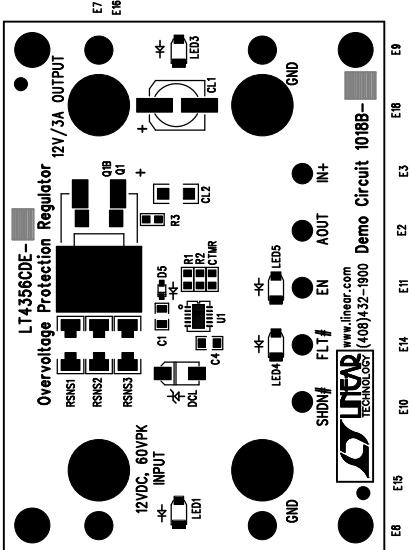
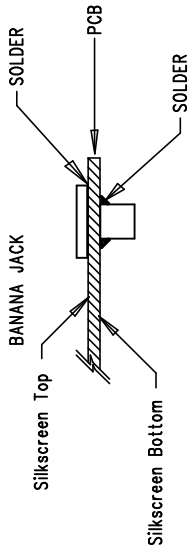


REVISIONS		
REV	APPR	DATE



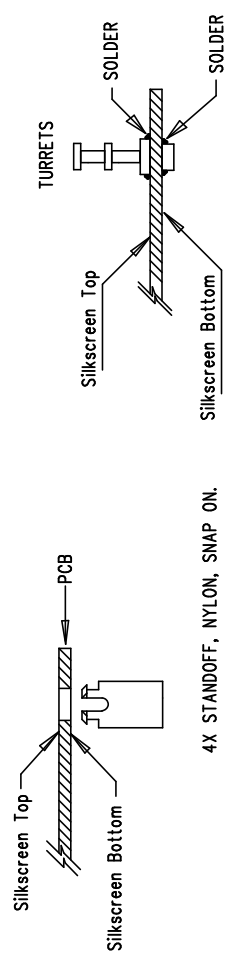
5. INSTALL BANANA JACK




Top Assembly Drawing

NOTES : Unless Otherwise Specified

1. BREAK BOARDS FROM THE PANEL WHEN ASSEMBLY IS COMPLETE.
2. OPTIONAL COMPONENTS ARE UNSTUFFED AND SHOULD BE COVER WITH SOLDER AFTER ASSEMBLY. (NO EXPOSED PADS)
3. INSTALL 4 STANDOFFS AT 4 CORNERS AS SHOWN BELOW:
4. INSTALL TURRETS



APPROVALS			 LINEAR TECHNOLOGY		1630 McCarthy Blvd. Milpitas, CA 95035 PH: (408)432-1900		
	INIT	DATE	TITLE: LT4356CDE OVERVOLTAGE PROTECTION REGULATOR				
DRAWN	Antonina K						
CHECK							
DESIGN							
ENGR	Mitchell Lee						
			SIZE	NONE	Demo Circuit 1018B	REV. B	
SCALE = NONE			DESIGN #		DC1018A.DSN	SHT 1 of 1	